

WENCO

SIMPLEX WIRE STRIPPERS AND CUTTERS S-130-C

INSTRUCTIONS

PART LISTS

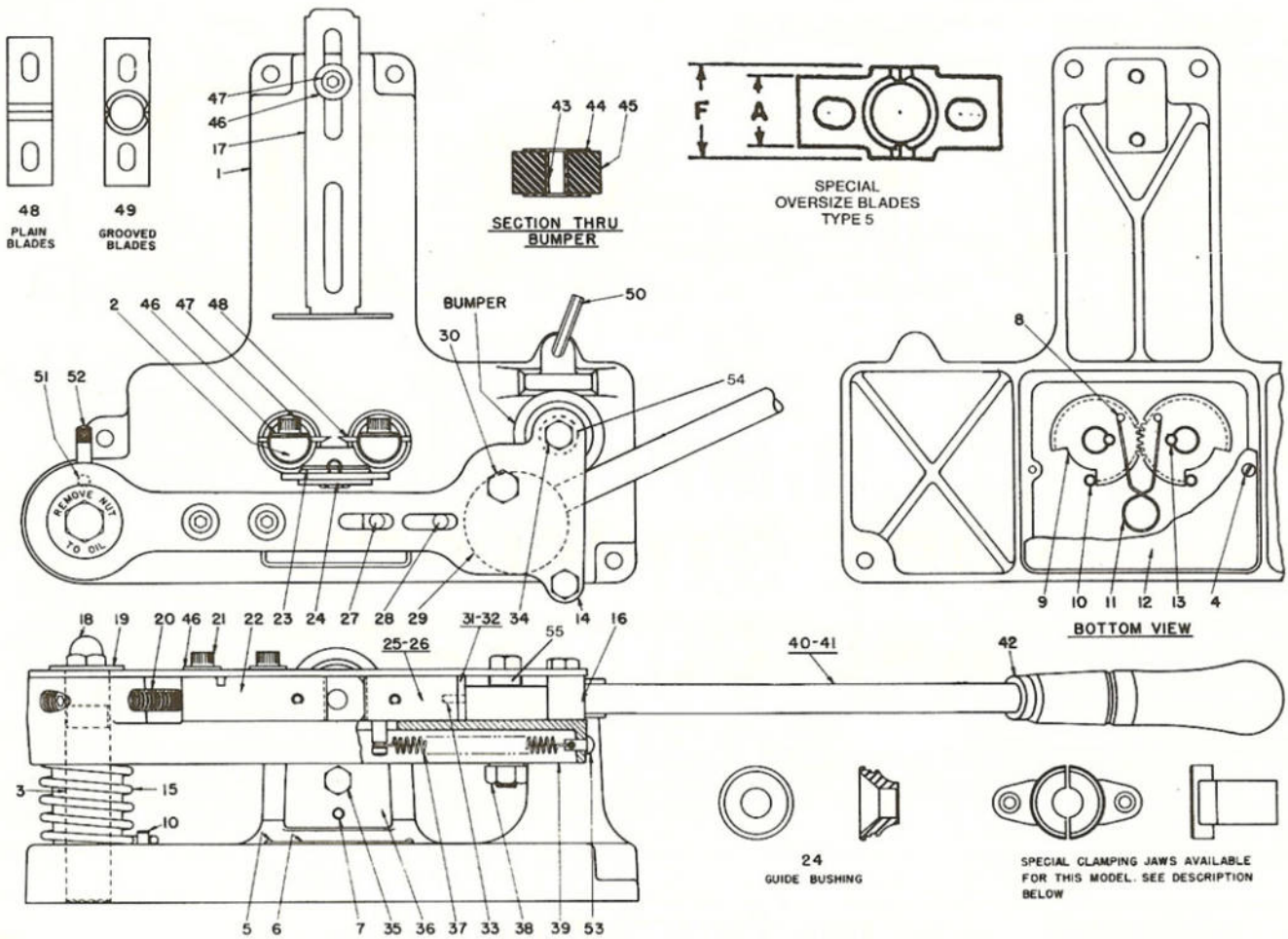


PRINTED IN U.S.A.

MANUFACTURED AND GUARANTEED BY
WENCO MANUFACTURING, INC.

11 N 261 MUIRHEAD ROAD, ELGIN, ILLINOIS 60123
708-377-7474 FAX 708-513-6599

SIMPLEX WIRE STRIPPER MODEL S-130-C



INSTRUCTIONS — S-130-C WIRE STRIPPER

INSTALLATION AND SETUP. Mount stripper securely on bench and screw handle furnished tightly into cam.

GUIDE BUSHING INSTALLATION—See Chart No. 2 for Available Sizes. To facilitate installing guide bushing a push button lock is provided to hold stripper arm open. Select proper guide bushing to clear outside diameter of wire and hold in place provided for same by means of spring retainer.

BLADE INSTALLATION. After proper guide bushing is installed select and mount proper blades to suit wire to be stripped and lineup as follows:
GROOVED BLADES—See Chart No. 3 for Available Sizes. Clamp grooved blades in position so that straight cutting edges touch and grooves are concentric with wire guide hole.

PLAIN BLADES. Clamp central with guide bushing and the proper distance apart to just clear the diameter of inner conductor being stripped. These blades can be used for parallel wire, heater cord and many single conductor wires.

ADJUSTMENT OF GRIPPING JAW. Loosen two top screws, locate gripping jaw so that serrated face is approximately one-half of the outside diameter of wire away from center line of guide bushing and tighten top screws. To avoid slippage, jaw must be backed up with set screw.

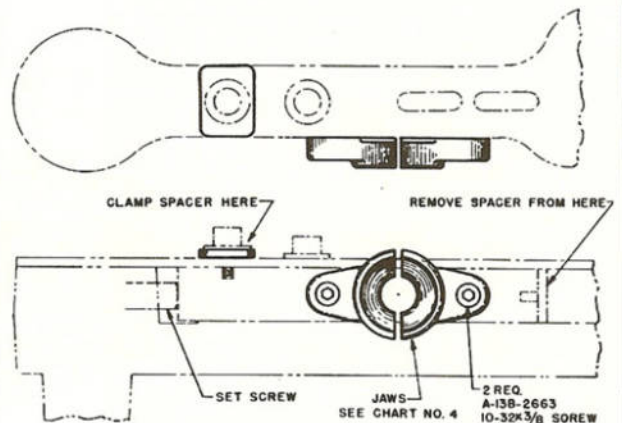
WIRE STOP. Set wire stop for proper stripping length. This stop is reversible to provide a 10" stripping length.

OPERATION. Hold wire in left hand and insert it through the clamping jaws and guide bushing up to the stop and a quick pull on the handle grips the wire and draws it through the oscillating stripping blades. Retain wire in left hand in same position it was at end of stripping stroke, then simultaneously release handle and pull wire away from machine, thus completing stripping operation.

LUBRICATION. Oil eccentric cam, movable jaw and stripper arm pivot with S.A.E. No. 10 oil.

IMPORTANT—DO NOT LUBRICATE OR USE ANY TYPE OF SOLVENT FOR CLEANING BLADE HOLDER JOURNALS.

CLAMPING JAW ATTACHMENT — MODEL S-130-C WIRE STRIPPER



INSTRUCTIONS

To avoid crushing insulation on certain wires such as metallic shielded cable, synthetic, cambric or woven insulation cable, we have made provisions on this stripper for a special circular clamping jaw attachment.

When using these jaws, remove spacer between cam and movable jaw and clamp spacer under screw shown. Pins will locate adjustable jaw in proper position, but jaw must be backed up with set screw.

See Chart No. 4 for available sizes of special jaws.

SIMPLEX WIRE STRIPPER MODEL S-130-C

CHART NO. 1

CHART NO. 2

CHART NO. 3

PART LIST				GUIDE BUSHINGS AVAIL.		GROOVED BLADES AVAILABLE					
ITEM NO.	NO. HEQD.	PART NO.	DESCRIPTION	HOLE SIZE	PART NO.	HOLE SIZE	PART NO.	HOLE SIZE	PART NO.		
1	1		Base Casting Assembly Inc., items 1-13 incl.	.063	B-5C-3242	.063	A-8C-4537	SPECIAL OVERIZE BLADES TYPE 5			
1	1	D-1B-4234-A	Base	.078	B-5C-3243	.078	A-8C-4538				
2	2	A-5B-4587	Blade Holder	.094	B-5C-3244	.094	A-8C-4539				
3	1	A-5B-4609	Pivot Stud	.109	B-5C-3245	.109	A-8C-4540			.750	A-8C-4593
4	2	A-17B-5189	Screw #4-40 X ¼ (Binder Heads)	.125	B-5C-3246	.125	A-8C-4541			.766	A-8C-4594
5	2	A-17A-2367	P.K. Drive Screws #0 x 3/16	.141	B-5C-3247	.141	A-8C-4542	.781	A-8C-4595		
6	1	A-19A-4619	Name Plate	.156	B-5C-3248	.156	A-8C-4543	.797	A-8C-4596		
7	2	A-5B-3237	Plain Straight Pin	.172	B-5C-3249	.172	A-8C-4544	.812	A-8C-4597		
8	2	A-17A-2368	P.K. Drive Screw #0 x ¼	.188	B-5C-3250	.188	A-8C-4545	.828	A-8C-4598		
9	2	A-5A-4606	Spur Gear	.203	B-5C-3251	.203	A-8C-4546	.844	A-8C-4599		
10	3	A-5B-3238	Pin, .750 Long, 3/16 Dia.	.219	B-5C-3252	.219	A-8C-4547	.859	A-8C-4600		
11	1	A-7C-3239	Torsion Spring	.234	B-5C-3253	.234	A-8C-4548	.875	A-8C-4601		
12	1	A-4B-4294	Bottom Plate	.250	B-5C-3254	.250	A-8C-4549	.890	A-8C-4602		
13	2	A-5B-3237	Pin (Shaft to Gear) 5/16" Long, 3/16" Dia.	.266	B-5C-3255	.266	A-8C-4550	.906	A-8C-4603		
				.281	B-5C-3256	.281	A-8C-4551	.922	A-8C-4604		
14	1	B-4B-4620	Top Plate	.297	B-5C-3257	.297	A-8C-4552	.938	A-8C-4605		
15	1	A-7C-3204	Torsion Spring	.313	B-5C-3258	.313	A-8C-4553	CHART NO. 4 CLAMPING JAWS			
16	1	A-5C-4608	Spacer	.326	B-5C-3259	.328	A-8C-4554				
17	1	B-4C-3206	Stop Bracket	.344	B-5C-3260	.344	A-8C-4555				
18	1	A-15C-2293	Hex Cap Nut 3/8-16	.359	B-5C-3261	.359	A-8C-4556			.188	B-2C-5222
19	1	A-4E-3205	Washer	.375	B-5C-3262	.375	A-8C-4557			.219	B-2C-5223
20	1	A-12A-3093-A	Set Screw 3/8-16 x 2½ Hollow Hex	.391	B-5C-3263	.391	A-8C-4558	.250	B-2C-5224		
21	2	A-13B-2781	Knurled Cap Screw ½-20 x 1¼	.406	B-5C-3264	.406	A-8C-4559	.281	B-2C-5225		
22	1	A-6A-4592	Adjustable Jaw	.422	B-5C-3265	.422	A-8C-4560	.313	B-2C-5226		
23	2	A-7C-3292	Retainer Spring	.438	B-5C-3266	.438	A-8C-4561	.344	B-2C-5227		
24	1	See Chart # 2	Guide Bushing	.453	B-5C-3267	.453	A-8C-4562	.375	B-2C-5228		
25	1	A-5A-4611	Moveable Jaw Assembly includes	.469	B-5C-3268	.469	A-8C-4563	.406	B-2C-5229		
26	1	A-6A-4591	Moveable Jaw	.484	B-5C-3269	.484	A-8C-4564	.438	B-2C-5230		
27	1	A-5B-4610	Spring Pin	.500	B-5C-3270	.500	A-8C-4565	.469	B-2C-5231		
28	1	A-9B-3195	Knurled Pin	.516	B-5C-3271	.516	A-8C-4566	.500	B-2C-5232		
				.531	B-5C-3272	.531	A-8C-4567	.531	B-2C-5233		
29	1	A-5C-3227	Eccentric Cam	.547	B-5C-3273	.547	A-8C-4568	.563	B-2C-5234		
30	1	A-13A-5272	Hex Hd. Screw 5/16-18 x 2½	.563	B-5C-3274	.563	A-8C-4569	.594	B-2C-5235		
31	1	A-SA-4626	Spacer Assembly Inc., items 31-33 incl.	.576	B-5C-3275	.578	A-8C-4570	.625	B-2C-5236		
32	1	A-4S-4624	Spacer	.594	B-5C-3276	.594	A-8C-4571	.656	B-2C-5237		
33	2	A-5B-4625	Dowel Pin	.609	B-5C-3277	.609	A-8C-4572	.688	B-2C-5238		
				.625	B-5C-3278	.625	A-8C-4573	NOTE THESE NOTES APPLY TO ALL STRIPPERS SHOWN IN THIS BULLETIN. All blades are mounted with bevel side toward operator. Ident. mark column is used for cross reference to old part number only. Use new part number when ordering. The A.W.G. wire sizes on blade charts are based on solid wire. Assemblies shown in part lists should be purchased as such and not by individual parts. Send wire samples for proper selection of grooved blades.			
34	2	A-13A-2540	Hex Hd. Screw ½-20 x 1¼	.641	B-5C-3279	.640	A-8C-4574				
35	1	A-13B-2553	Hex Hd. Cap Screw ¼-20 x ½	.656	B-5C-3280	.656	A-8C-4575				
36	1	A-4B-3240	Guide Bushing Plate	.672	B-5C-3281	.672	A-8C-4576				
37	1	A-7A-3233	Extension Spring	.688	B-5C-3282	.688	A-8C-4577				
38	1	A-15A-2172	Hex Nut Full 5/16-18 Heavy	.703	B-5C-3283	.703	A-8C-4578				
39	1	C-1C-4197-A	Stripper Arm Casting	.719	B-5C-3284	.719	A-8C-4579				
40	1	B-8A-3210	Lever Bar Assembly Inc., items 40-42 incl.	.734	B-5C-3285	.734	A-8C-4580				
41	1	A-5B-3192	Lever Bar	.750	B-5C-3286	.750	A-8C-4581				
42	1	A-20B-3191	Handle			.766	A-8C-4582				
						.781	A-8C-4583				
43	1	A-5C-3229	Spacer			.797	A-8C-4584				
44	2	A-4B-3231	Washer			.812	A-8C-4585				
45	1	A-22A-3230	Rubber Bumper								
46	5	A-4E-3207	Washer								
47	1	A-13B-2774	Knurled Cap Screw ¼-20 x ½								
48	1 Set	A-8C-4586	Blade (Plain)								
49	1 Set	See Chart # 3	Blade (Grooved)								
50	1	A-9A-3217	Allen Wrench 3/16 Hex.								
51	1	A-5B-4726	Pin								
52	1	A-5B-4725	Push Button Pin								
53	1	A-16A-3204	Spring Pin								
54	1	A-4B-4607	Spacer 7/8 x 1/4 x 1/4, Under 34								
55	1	A-4B-4612	Spacer 3/4 x 1/4 x 5/16, Under 30								

WENCO Engineers are at all times ready and able to serve you as they have served our many thousands of customers since 1920.